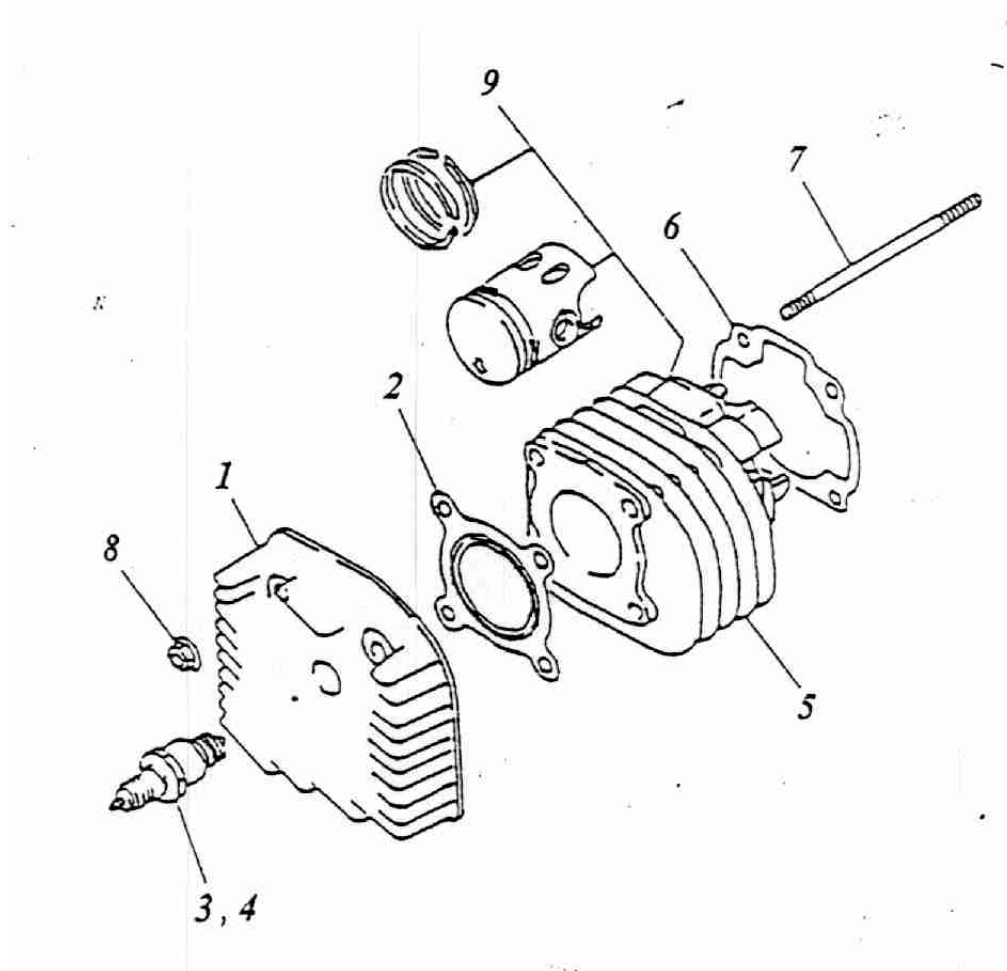


Zulassung für 1 Person

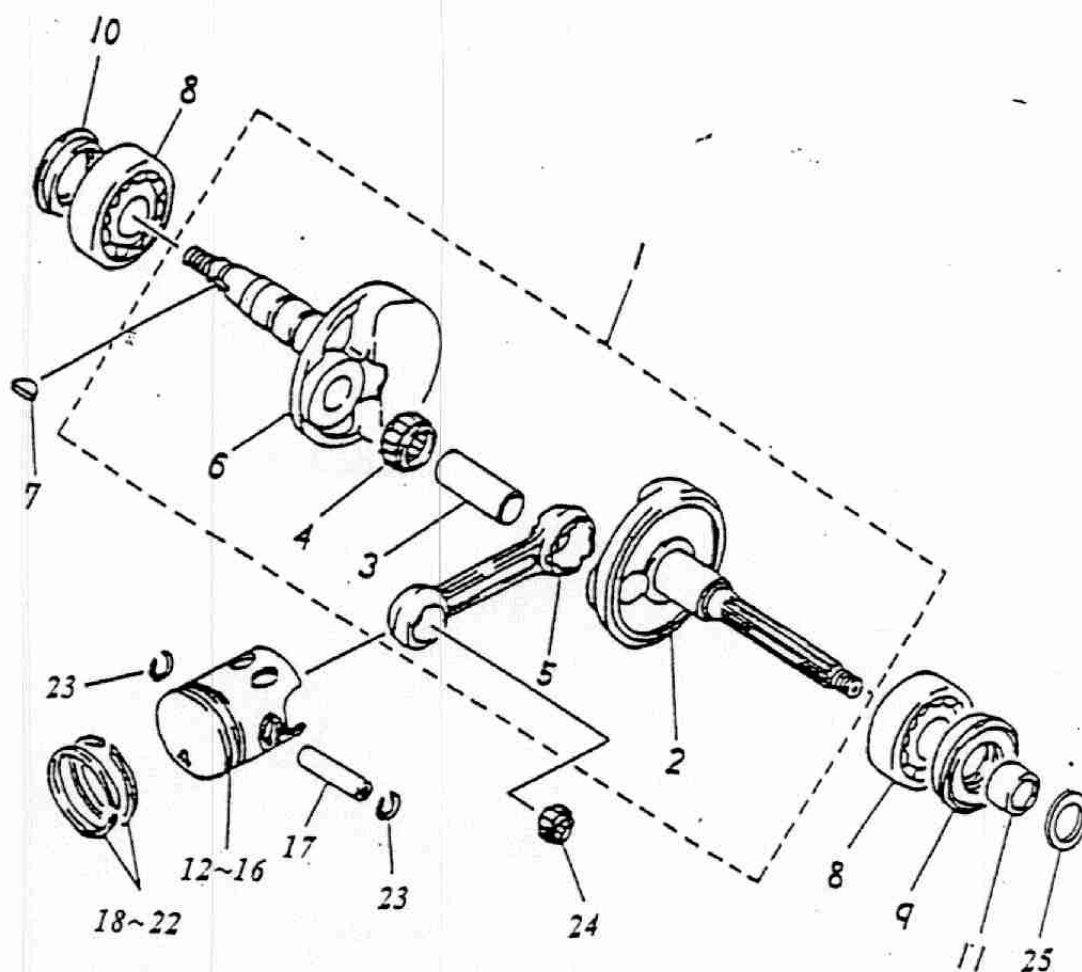
ERING

Zylinder



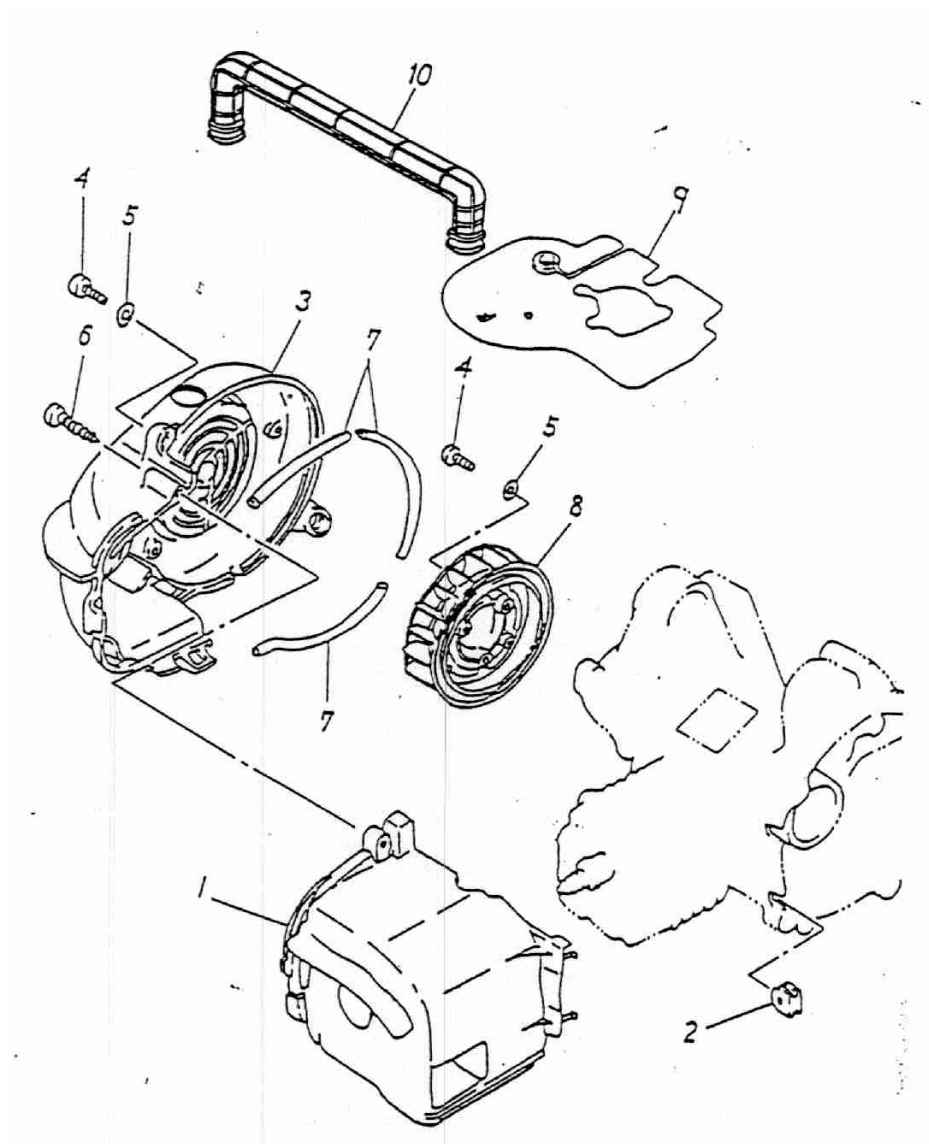
1	12201-116-000	1 CYLINDER HEAD
2	12251-116-000	1 CYLINDER HEAD GASKET
3	98076-101-000	1 SPARK PLUG
4	98076-101-00A	1 RESISTANCE SPARK PLUG
5	12101-116-000	1 CYLINDER
6	12191-116-000	1 CYLINDER GASKET
7	91001-07110	4 STUD BOLT
8	94050-07000	4 HEX FLANGE NUT WITH SERRATION
9	12301-116-000	1 CYLINDER COMP

Kurbelwelle



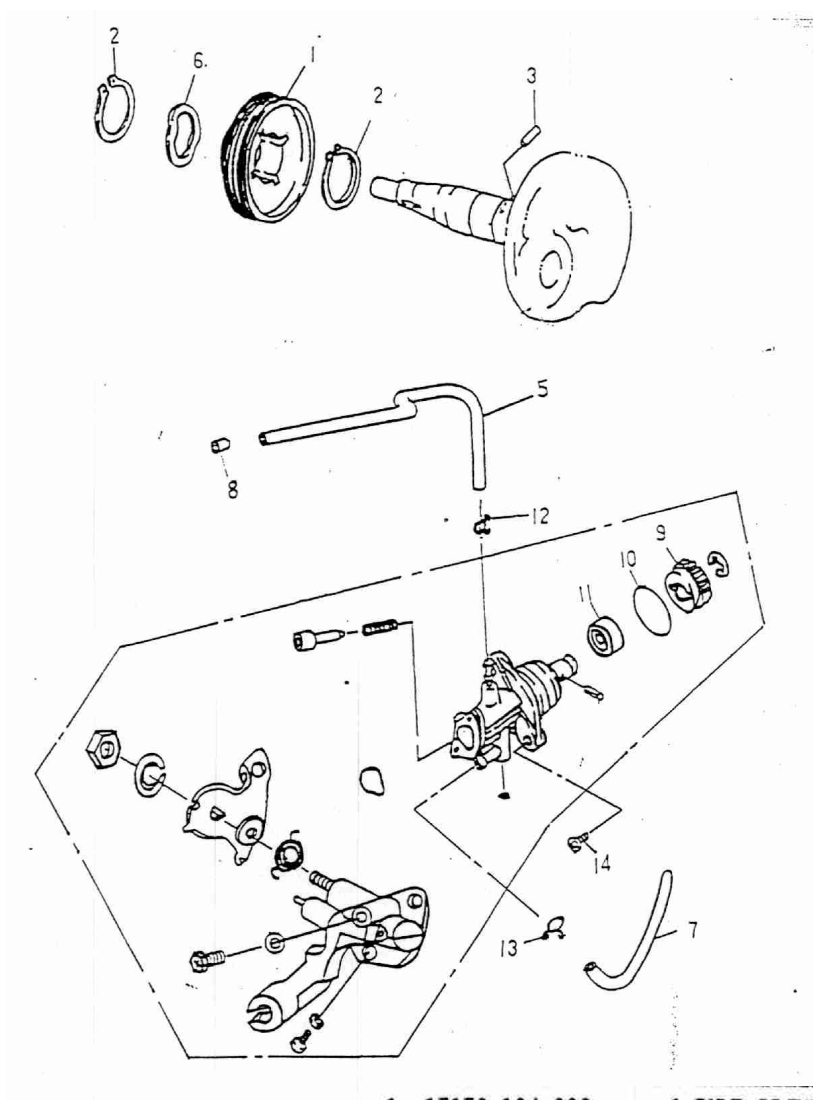
1	13000-116-000	1 CRANKSHAFT ASS'Y
2	13321-116-000	1 LEFT CRANK
3	13381-104-000	1 CRANK PIN
4	96200-162212	1 NEEDLE BEARING
5	13201-104-000	1 CRANK CONNECTING ROD
6	13311-116-000	1 RIGHT CRANK
7	90471-104-000	1 SEMICYCLE KEY
8	96100-62040	2 RADIAL BALL BEARING
9	96500-20428	1 OIL SEAL
10	96500-20306	1 OIL SEAL
11	13316-116-000	1 LEFT CRANK COLLAR
12	13100-116-000	1 PISTON
13	13111-104-000	1 PISTON PIN
14	13011-116-000	1 PISTON RING SET
15	13115-104-000	2 PISTON PIN CLIP
16	96200-101412	1 NEEDLE BEARING
17	94101-1319005	1 PLAIN WASHER

Lüftergehäuse



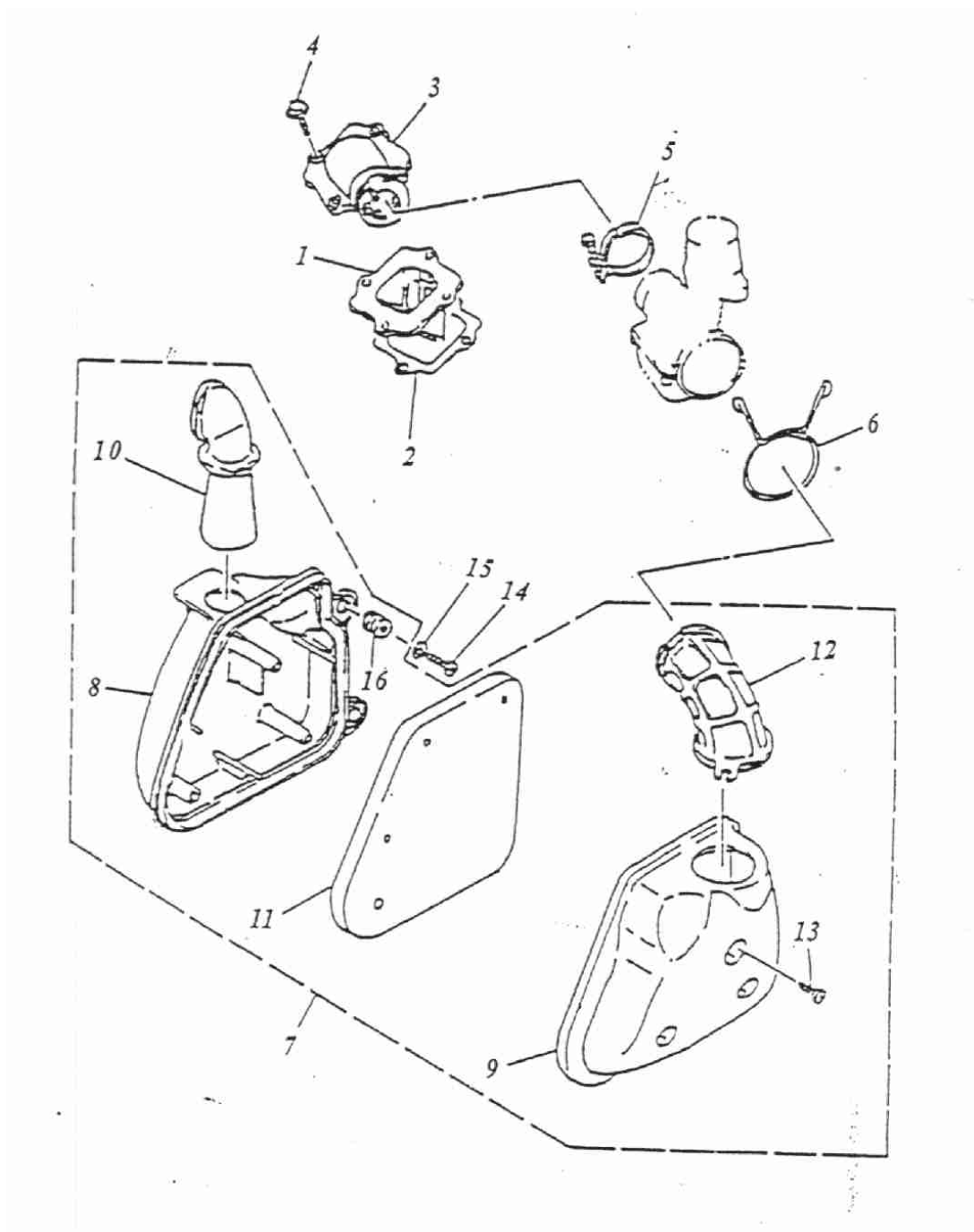
1 19620-116-000	1 CYLINDER AIR SHROUD
2 83552-116-000	2 GROMMET
3 19610-116-001	1 GENERATOR COVER (HOLE)
4 91000-06015	4 HEX SOCKET BOLT
5 94101-0613010	6 PLAIN WASHER
6 93903-05040	1 TAPPING SCREW TRUSS HEAD PHILLIPS
7 17632-116-000	2 DAMPER
8 19510-116-000	1 FAN
9 55122-116-000	1 DEFLECTOR
10 91000-06020	2 HEX SOCKET BOLT
11 19612-145-000	0 GENERATOR OUTER COVER

Ölpumpe



1	15150-104-000	1 PUMP DRIVE GEAR
2	94511-1900S	2 EXTERNAL CIR CLIP
3	96300-030118	1 CRANK SHAFT PIN
4	15100-116-00A	1 OIL PUMP ASS'Y
5	94400-0205250	1 OIL TUBE
6	15151-104-000	1 WAVE WASHER
7	94400-0408465	1 TUBE
8	15101-116-000	1 STEEL RING
9	15136-110-000	1 OIL PUMP WORMWHEEL
10	91319-110-000	1 OIL RING
11	96500-09164	1 OIL SEAL
12	94510-05000	2 CLIP
13	94510-08000	2 CLIP
14	93500-05015	2 PAN PHILLIPS BOLT

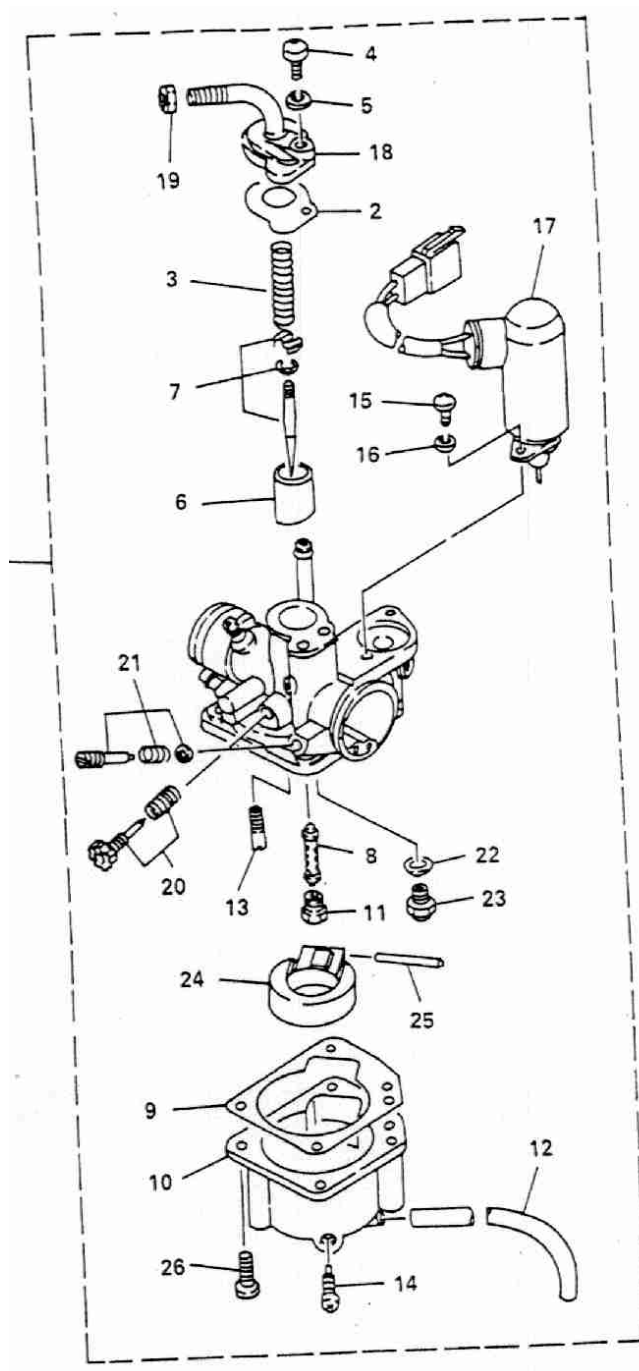
Luftfilter



Luftfilter

1	14100-116-000	1 REED VALVE ASS'Y
2	17111-116-000	1 REED VALVE GASKET
3	17100-116-000	1 INTAKE MANIFOLD (3XG)
4	96000-06018-08	4 HEX WASHER FACE BOLT
5	14110-104-000	1 INTAKE MANIFOLD HOSE CLAMP
6	94510-40000	1 CLIP
7	17200-116-000	1 AIR CLEANER ASS'Y
8	17206-116-000	1 AIR CLEANER BASE
9	17207-116-000	1 AIR CLEANER COVER
10	17219-116-000	1 GUIDE PIPE
11	17205-116-000	1 AIR CLEANER ELEMENT
12	17253-116-000	1 AIR CLEANER JOINT
13	93903-05025	3 TAPPING SCREW TRUSS HEAD PHILLIPS
14	91000-06020	2 HEX SOCKET BOLT
15	94101-0613010	2 PLAIN WASHER
16	96485-116-000	2 GROMMET

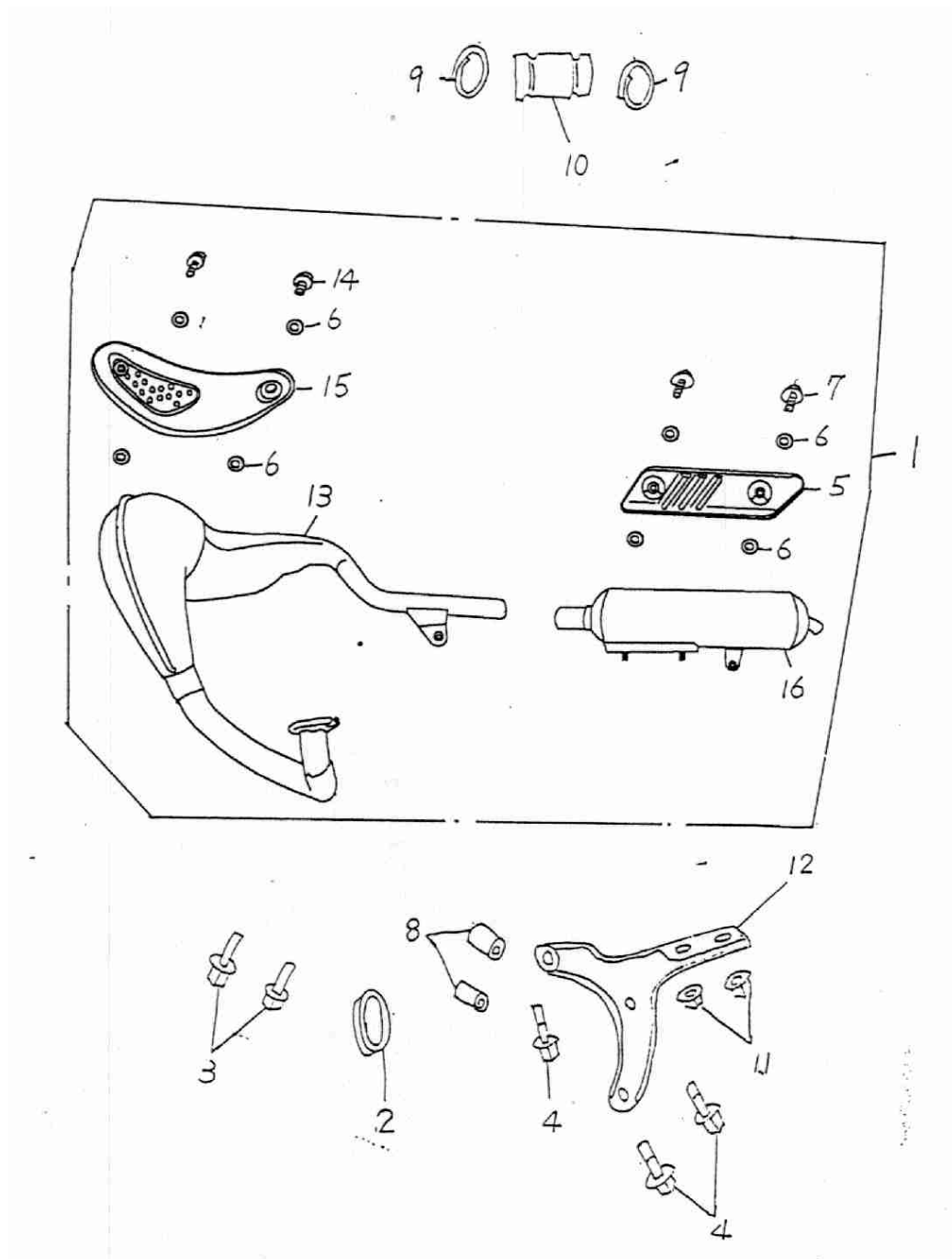
Vergaser



Vergaser

1	16100-104-000	1 CARBURETOR ASS'Y
2	16101-104-000	1 CARBURETOR GASKET
3	16102-104-000	1 THROTTLE VALVE SPRING
4	93500-05012	1 PAN PHILLIPS BOLT
5	94111-0509212	1 SPRING WASHER
6	16103-104-000	1 THROTTLE VALVE
7	16104-104-000	1 NEEDLE SET
8	16105-104-000	1 NEEDLE NOZZLE
9	16106-104-000	1 FLOAT CHAMBER GASKET
10	16107-104-000	1 FLOAT CHAMBER
11	16108-104-002	1 MAIN JET (72.5)
12	16109-104-000	1 OVER FLOW TUBE
13	16110-104-000	1 PILOT JET
14	16111-104-000	1 DRAIN PLUG
15	93500-04008	1 PAN PHILLIPS BOLT
16	94111-0407310	1 SPRING WASHER
17	17215-104-000	1 PLUNGER STARTER
18	16112-104-000	1 TOP MIXING CHAMBER
19	16113-104-000	1 CABLE ADJUST NUT
20	16114-104-000	1 THROTTLE SCREW SET
21	16115-104-000	1 AIR ADJUST SCREW SET
22	16116-104-000	1 NEEDLE VALVE WASHER
23	16117-104-000	1 NEEDLE VALVE ASS'Y
24	16118-104-000	1 FLOAT
25	16119-104-000	1 FLOAT PIN
26	93500-04014	4 PAN PHILLIPS BOLT
27	16214-154-000	1 CARBURETOR RUBBER CONNECTER

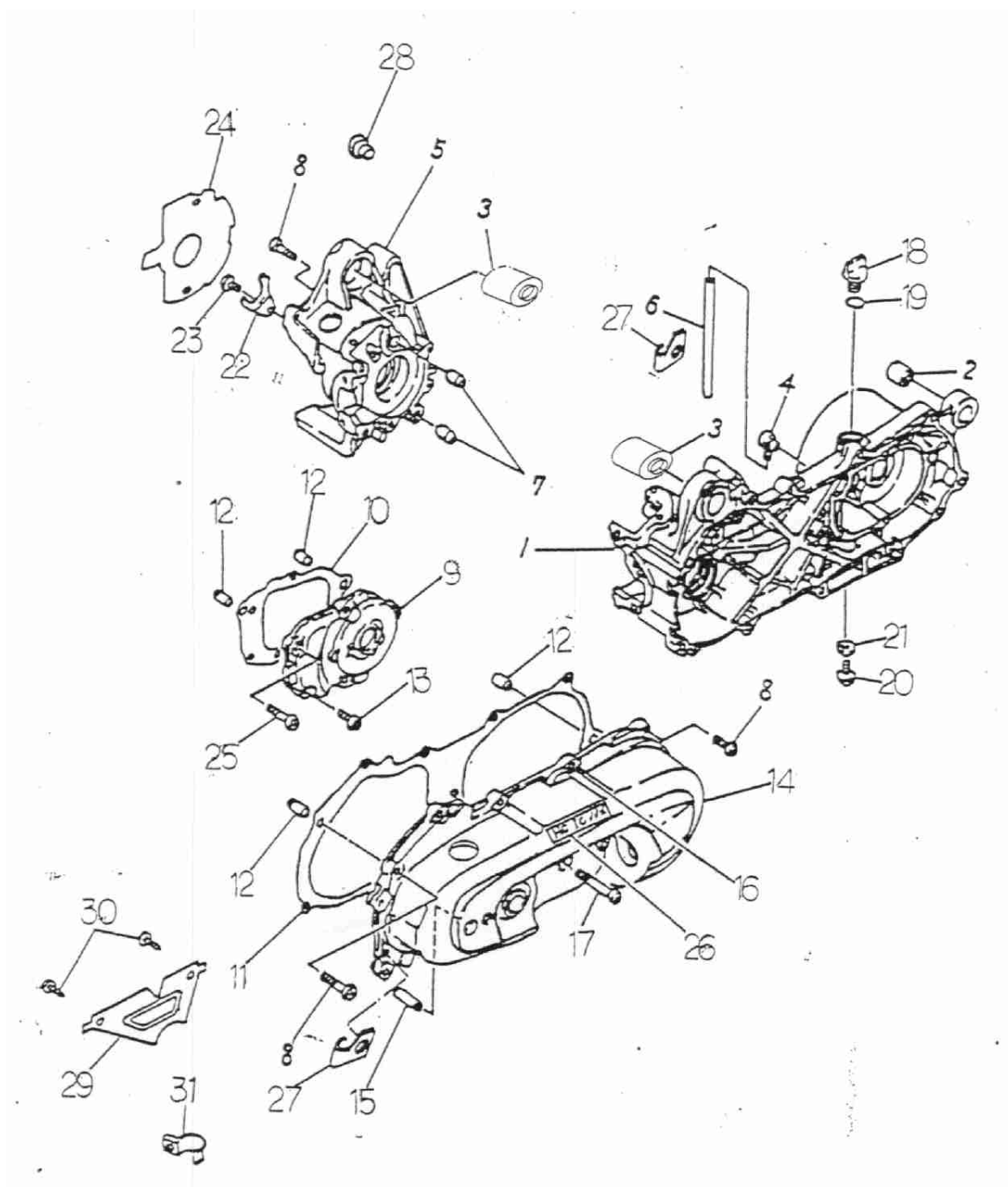
Auspuff



Auspuff

1	18300-154-00A	1	MUFFLER ASS'Y, CATE
2	18291-104-000	1	EXHAUST PIPE GASKET
3	92001-06018-10	2	HEX HEAD PHILLIPS BOLT
4	96000-08032-12	3	HEX WASHER FACE BOLT
5	18301-154-000	1	PROTECTOR COMP MUFFLER
6	94101-0612015	8	PAPER PLAIN WASHER
7	93701-06008	2	PAN FLAT HEAD PHILLIPS BOLT
8	51115-145-000	2	HOLDER SPACER COLLER
9	94510-30000	2	CLIP
10	18306-154-000	1	
11	94050-08000	1	HEX FLANGE NUT WITH SERRATION
12	18353-154-000	1	EXHAUST BRACKET
13	18311-154-000	1	EXHAUST PIPE, FRONT
14	93500-06010	2	PAN PHILLIPS BOLT
15	18318-154-000	1	MUFFLER SHROUD
16	18321-154-000	1	SILENCER MUFFLER

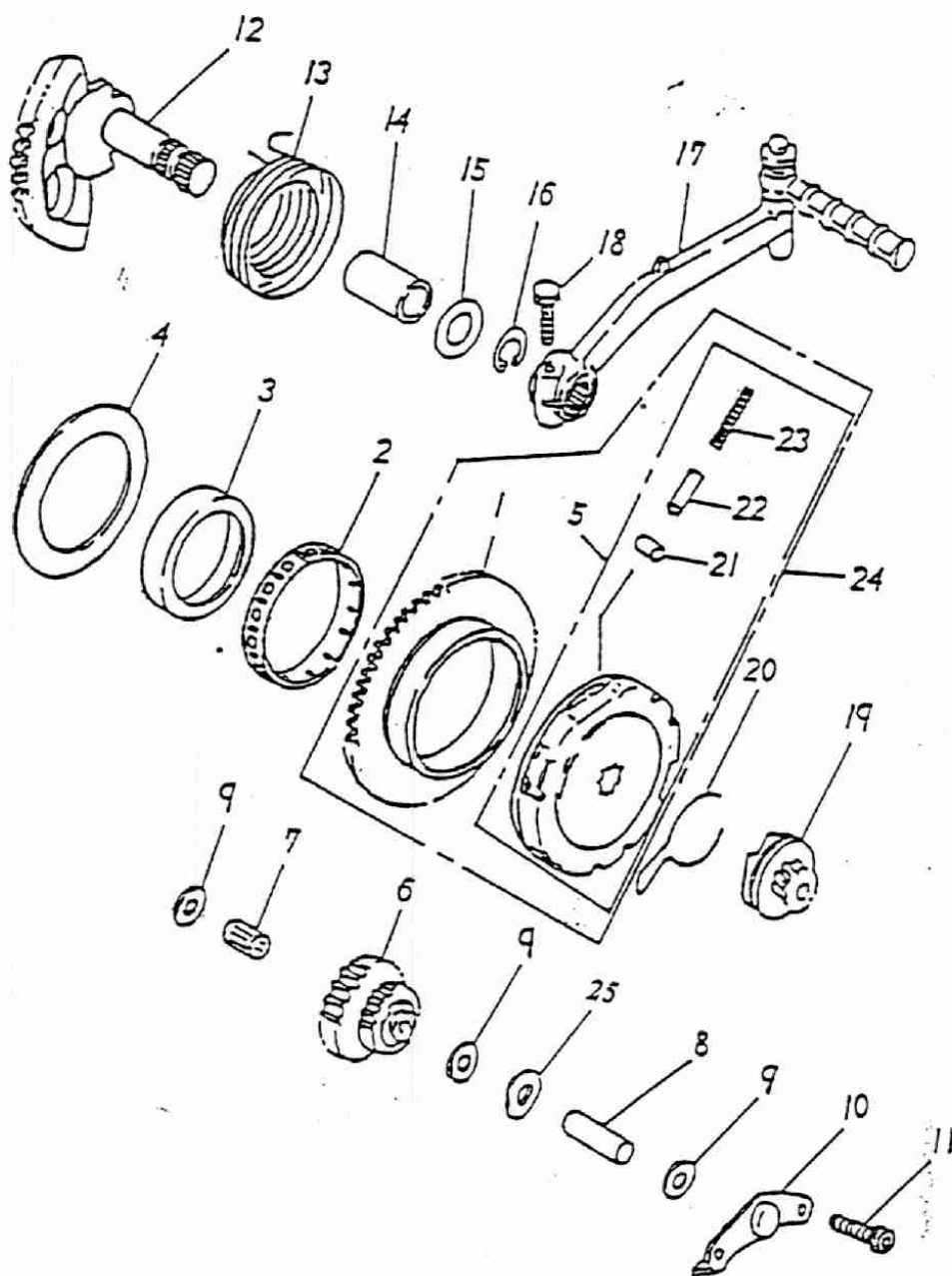
Motorengehäuse



Motorengehäuse

1	11201-116-000	1 LEFT CRANKCASE
2	96400-082020	1 RUBBER BUSHING
3	11203-145-000	2 BUSH (REV.1)
4	16610-104-000	1 BREATHER HOSE HEAD
5	11101-116-000	1 RIGHT CRANKCASE
6	16615-104-000	1 BREATHER HOSE
7	94301-12160	2 DOWEL PIN
8	91000-06035	8 HEX SOCKET BOLT
9	21301-116-000	1 MISSION COVER
10	21395-116-000	1 MISSION COVER GASKET
11	11359-116-000	1 CRANKCASE COVER GASKET
12	94301-10140	4 DOWEL PIN
13	91000-06020	3 HEX SOCKET BOLT
14	11341-116-000	1 LEFT CRANKCASE COVER
15	96300-080320	1 SHAFT IDLER
16	91000-06025	7 HEX SOCKET BOLT
17	91000-06060	1 HEX SOCKET BOLT
18	15650-110-000	1 OIL PLUG
19	91312-104-000	1 OIL RING
20	96000-08015-12	1 HEX WASHER FACE BOLT
21	94101-0813010	1 COPPER PLAIN WASHER
22	11111-104-000	1 OIL SEAL BRACKET
23	91000-06010	1 HEX SOCKET BOLT
24	11121-116-000	1 GENERATOR GASKET
25	91000-06030	2 HEX SOCKET BOLT
26	87733-116-000	1 "HER CHEE" STICKER
27	11351-104-000	2 CARBURETOR TUBE BRACKET
28	11102-116-000	1 PROTECT SHROUD
29	11342-116-000	1 PLATE L COVER
30	93903-04008	2 TAPPING SCREW TRUSS HEAD PHILLIPS
31	11351-120-00A	1 CLAMP
32	50310-154-000	1 REAR FENDER BRACKET (LEFT)
33	50310-154-00A	1 REAR FENDER BRACKET (LEFT)

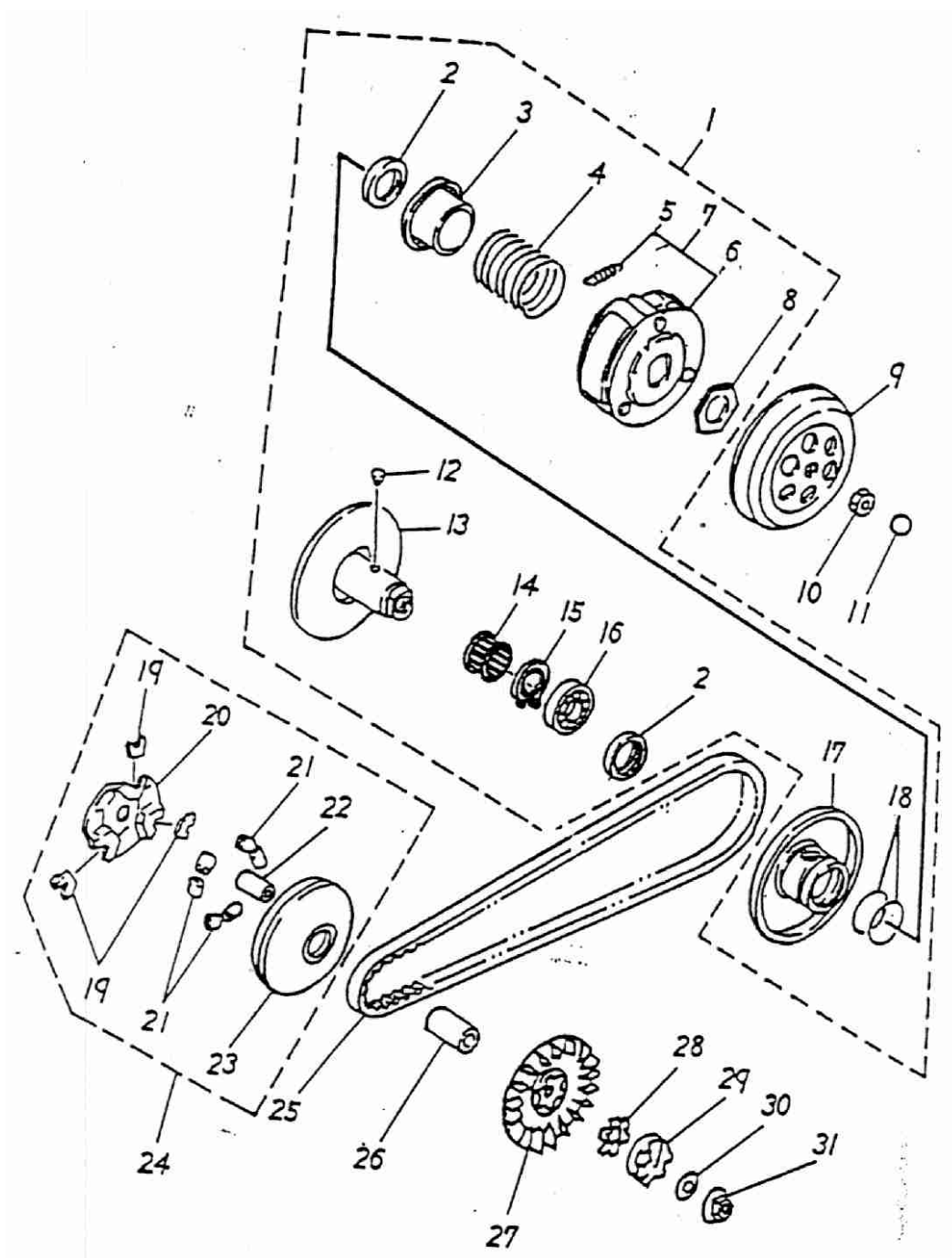
Starter



Starter

1	28220-116-000	1 STARTER WHEEL
2	96200-555912	1 NEEDLE BEARING
3	96202-116-000	1 BOSS
4	94101-5676006	1 PLAIN WASHER
5	28410-116-001	1 ELECTRIC STARTER CLUTCH SET
6	23422-116-000	1 IDLER GEAR
7	96200-081210	1 NEEDLE BEARING
8	96300-080320	1 SHAFT IDLER
9	94101-0818008	3 PLAIN WASHER
10	11206-116-000	1 IDLER GEAR PLATE
11	91000-06010	2 HEX SOCKET BOLT
12	28250-116-000	1 STARTING SHAFT ASS'Y
13	28281-110-000	1 STARTING SHAFT RESET SPRING
14	96401-152030	1 BUSHING
15	94101-1528010	1 PLAIN WASHER
16	94511-1500S	1 EXTERNAL CIR CLIP
17	28300-104-000	1 KICK CRANK ASS'Y
18	96000-06025-10	1 HEX WASHER FACE BOLT
19	28230-104-000	1 KICK PINION ASS'Y
20	28223-104-000	1 KICK PINION SPRING CLIP
21	28411-116-001	3 CLUTCH ROLLER
22	28412-116-000	3 CLUTCH GUIDER
23	28413-116-001-	3 CLUTCH SPRING
24	28400-116-001	1 ELECTRIC STARTER CLUTCH ASS'Y
25	92022-851618	1 WAVE WASHER

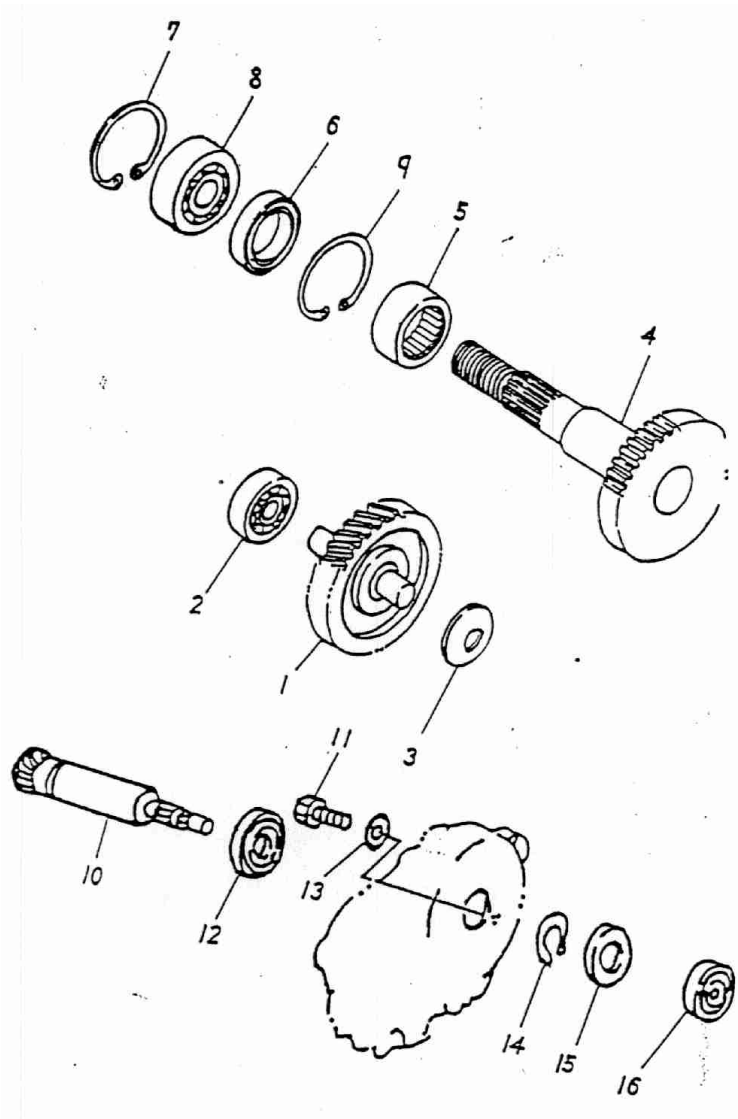
Fliehkraftkupplung



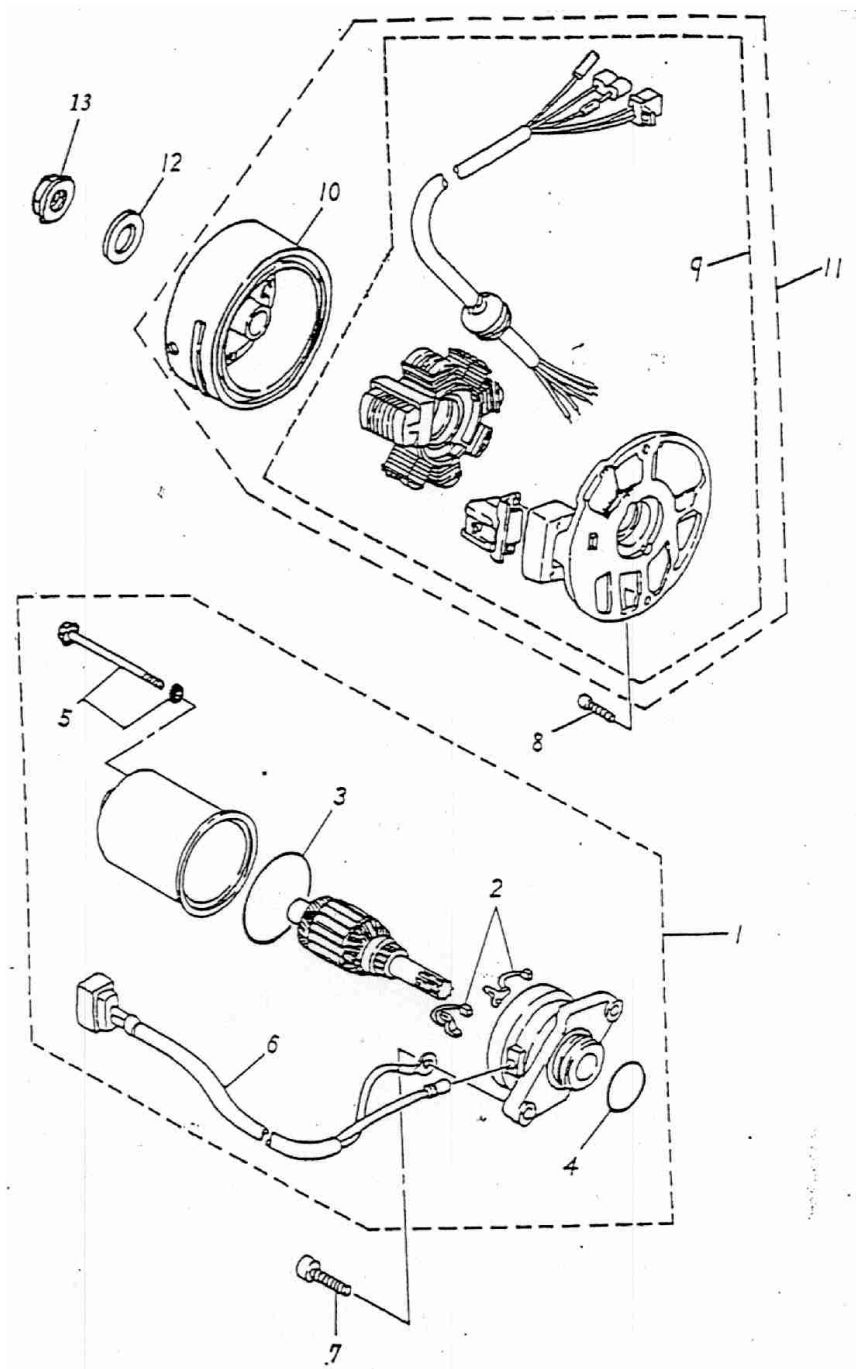
Fliehkraftkupplung

1	22000-116-000	1 DRIVE FACE ASS'Y
2	96500-33394	2 OIL SEAL
3	23237-116-000	1 SECONDARY SPRING SEAT
4	23233-116-000	1 COMPRESSION SPRING
5	22401-116-000	3 CLUTCH WEIGHT SPRING
6	22350-116-000	1 CLUTCH CARRIER
7	22535-116-000	1 CLUTCH WEIGHT SET
8	90202-116-000	1 NUT
9	22100-116-000	1 CLUTCH COVER COMP
10	94001-10000	1 HEX NUT
11	91313-104-000	1 OIL RING
12	23225-116-000	2 GUIDE PIN
13	23200-116-000	1 SECONDARY FIX SLOT WHEEL
14	96200-172518	1 NEEDLE BEARING
15	94512-240IR	1 INTERNAL CIR CLIP
16	96100-6901U	1 RADIAL BALL BEARING
17	23220-116-000	1 SECONDARY SLIDING SLOT WHEEL
18	91336-104-000	2 OIL RING
19	22132-104-000	3 CAM PLATE SLIDER
20	22131-116-000	1 CAM PLATE
21	22121-116-000	6 WEIGHT ROLLER
22	96401-182322	1 BUSHING
23	22110-116-000	1 PRIMARY SLIDING SLOT WHEEL
24	22103-116-000	1 SLIDING DRIVE FACE ASS'Y
25	23100-116-000	1 V-BELT
26	96401-131838D	1 BUSHING
27	22102-116-000	1 PRIMARY FIX SHEAVE
28	22150-110-000	1 LCAW WASHER
29	22140-110-000	1 ONEWAY CLUTCH
30	22145-104-000	1 CONE SPRING WASHER
31	94050-10000	1 HEX FLANGE NUT WITH SERRATION

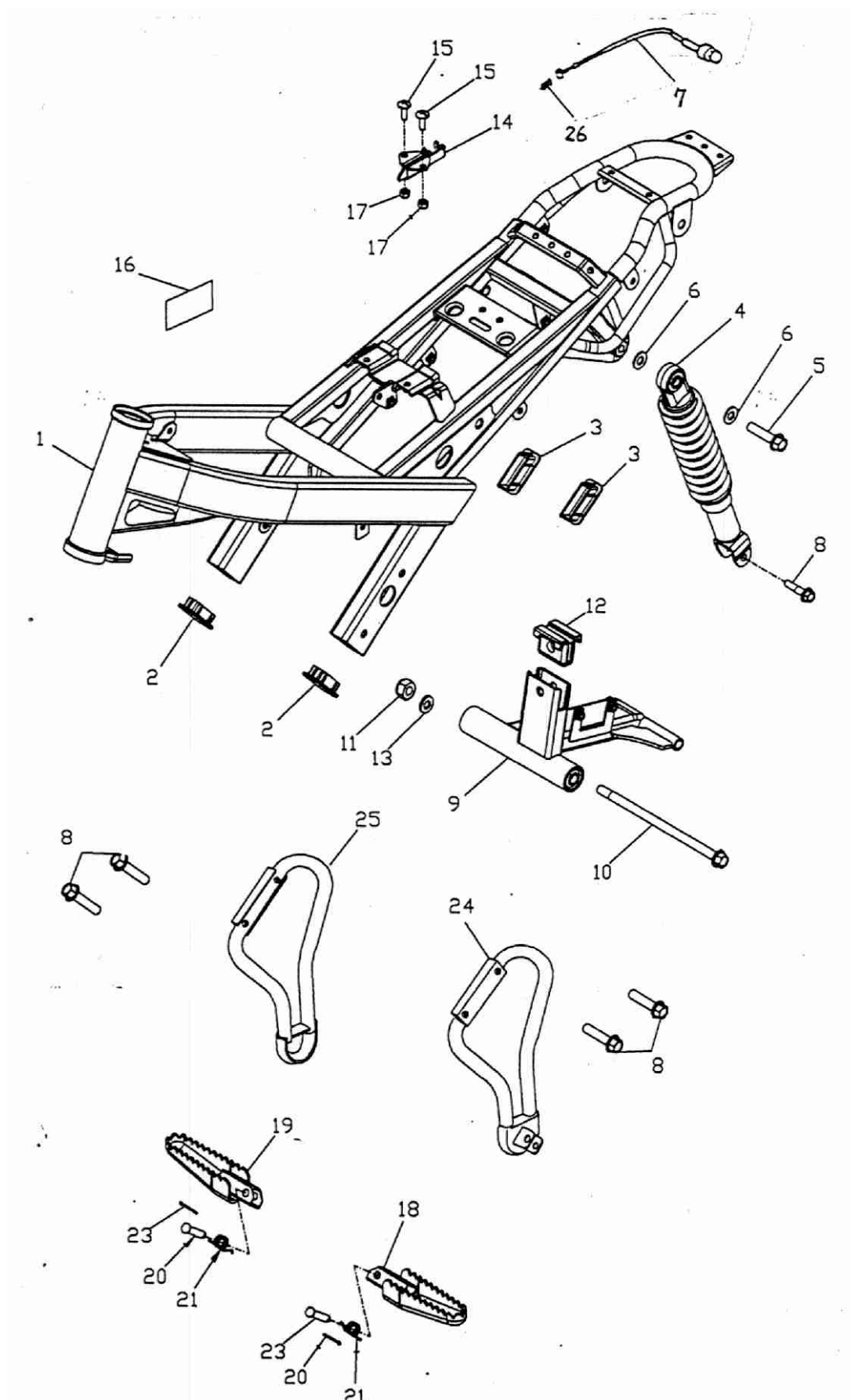
ERING



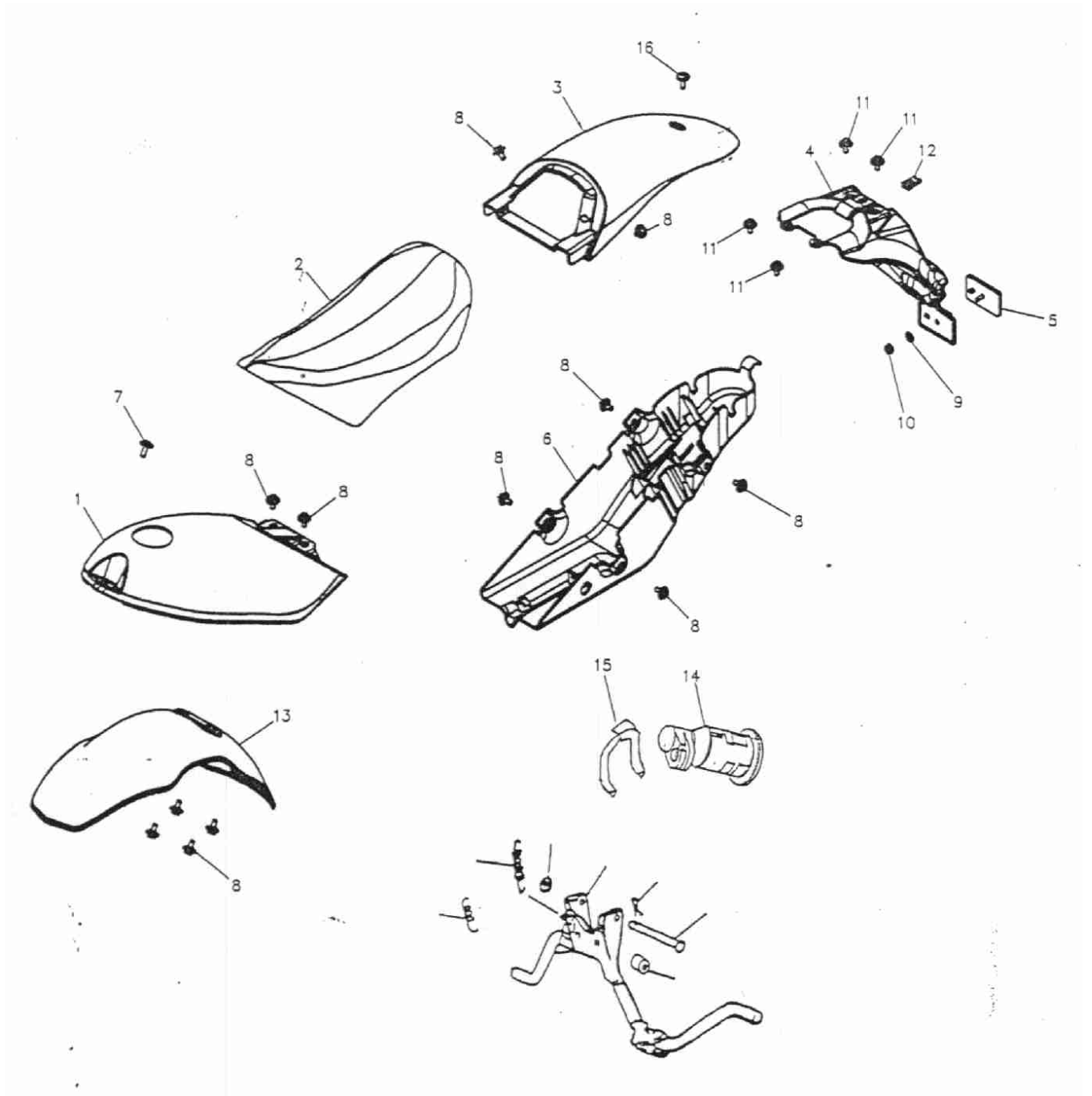
1	23420-116-000	1 MAIN AXLE COMP
2	96100-62010	1 RADIAL BALL BEARING
3	94101-1229016	1 PLAIN WASHER
4	23430-116-000	1 DRIVE AXLE
5	96200-253315	1 NEEDLE BEARING
6	96500-25356	1 OIL SEAL
7	94512-4300R	2 INTERNAL CIR CLIP
8	96100-6004U	1 RADIAL BALL BEARING
9	94512-3400R	1 INTERNAL CIR CLIP
10	23411-116-000	1 PRIMARY DRIVE GEAR
11	92000-06010-10	1 HEX BOLT
12	96100-60030	1 RADIAL BALL BEARING
13	94101-0620005	1 PLAIN WASHER
14	94511-1700S	1 EXTERNAL CIRCLIP
15	96500-17285	1 OIL SEAL
16	96100-638RD	1 RADIAL BALL BEARING
17	94111-0612015	1 SPRING WASHER



1	31200-116-000	1 STARTING MOTOR ASS'Y
2	31201-104-000	1 BRUSH SET
3	91342-104-000	1 OIL RING
4	91323-104-000	1 OIL RING
5	90115-104-000	2 BOLT SET
6	31202-116-000	1 CORD COMP.
7	91000-06020	2 HEX SOCKET BOLT
8	91000-06015	2 HEX SOCKET BOLT
9	31120-116-000	1 STATOR COMP.
10	31110-116-000	1 GENERATOR FLYWHEEL
11	31100-116-000	1 GENERATOR ASS'Y
12	94101-1022020	1 PLAIN WASHER
13	94050-10000	1 HEX FLANGE NUT WITH SERRATION



1	50100-154-000	1	FRAME COMP
2	96422-154-000	2	TUBE CAP (SHORT)
3	96421-154-000	2	TUBE CAP (LONG)
4	52400-154-000	1	REAR CUSHION ASS'Y
5	96000-10048-14	1	HEX WASHER FACE BOLT
6	94101-1030030	2	PLAIN WASHER
7	77212-154-000	1	SEAT RELEASE CABLE
8	96000-08025-12	1	HEX WASHER FACE BOLT
9	50350-154-000	1	ENGINE BRACKET ASS'Y
10	96000-10190-14	1	HEX WASHER FACE BOLT
11	90350-10000	2	NUT NYLON
12	60352-154-000	1	
13	94101-1022015	2	PLAIN WASHER
14	77230-145-000	1	SEAT LOCK ASS'Y
15	93500-06015	2	PAN PHILLIPS BOLT
16	50110-116-000	1	ALUMINUM PLATE
17	90350-06000	2	NYLON NUT
18	50717-158-000	1	RIGHT STEP PLATE
19	50718-158-000	1	LEFT STEP PLATE
20	94201-20190	2	COTTER PIN
21	42617-154-000	2	RETURN SPRING
22	77213-145-000	1	RESET SPRING
23	50712-154-000	2	PIN
24	50615-154-000	1	L. STEP BAR COMP
25	50616-154-000	1	R. STEP BAR COMP



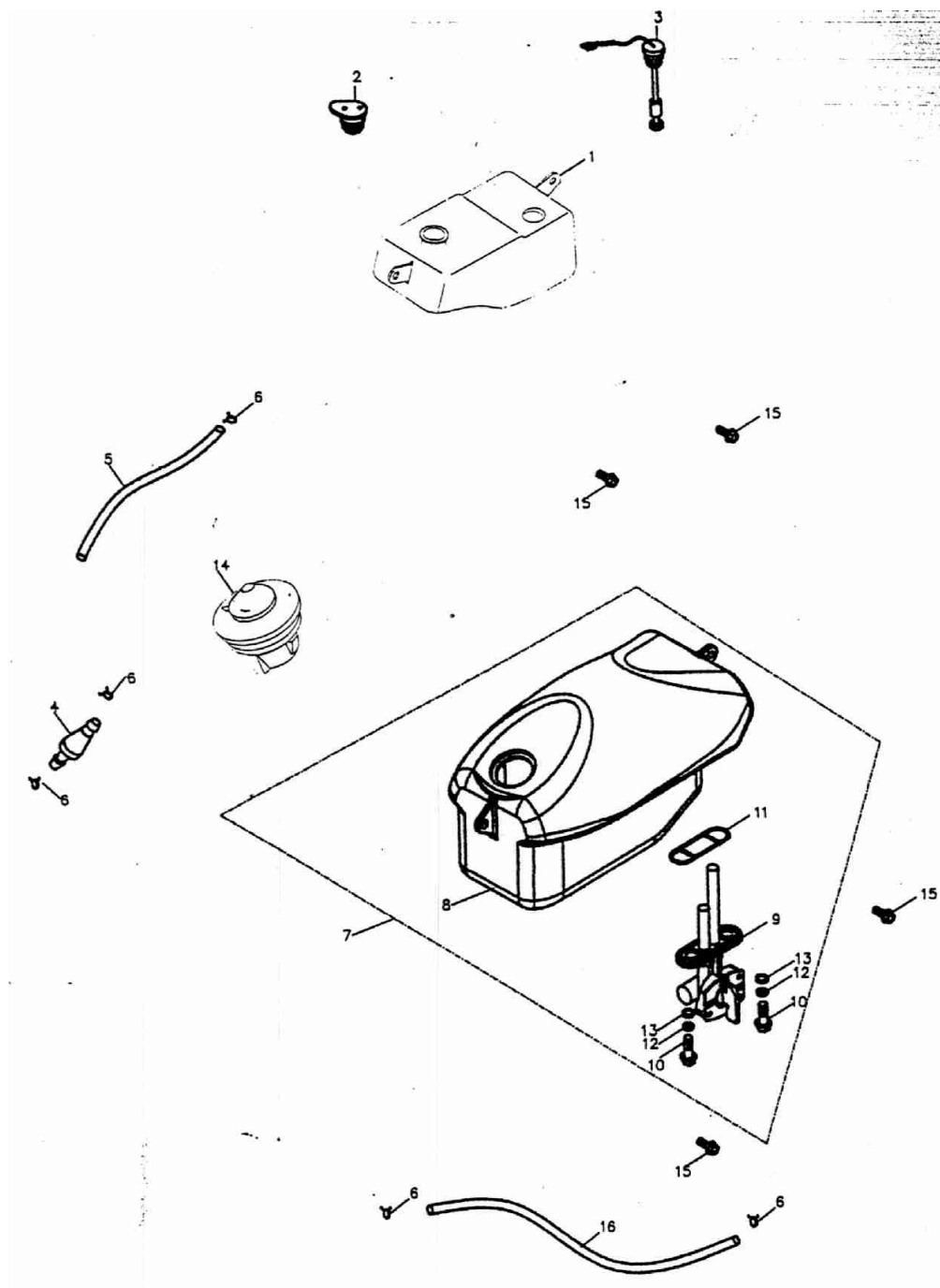
1	64301-154-000	1 FUEL TANK OUTER COVER
2	77200-154-000	1 SEAT ASS'Y
3	83400-154-000	1 REAR COVER
4	80116-154-000	1 REAR FENDERD
5	33741-105-000	1 REFLECTOR
6	77207-158-000	1 LOWER BODY COVER
7	93800-06020S	1 PAN PHILPS BOLT
8	90111-06014-18G	12 LADDER BOLT
9	94101-0514010	1 PLAIN WASHER
10	94001-05000	1 HEX NUT
11	96000-06012-16	4 HEX WASHER FACE BOLT
12	90344-0600A	1 U PLATE NUT
13	61100-158-000	1 FRONT FENDER
14	77230-154-000	1 SEAT LOCK ASS'Y
15	77235-154-000	1 SEAT LOCK BRACKET
16	93000-06012	1 ROUND PHILLIPS BOLT
17	50500-125-000	1 MAIN STAND COMP
18	95011-101-000	1 RUBBER
19	50503-116-000	1 MAIN STAND FIX SHAFT
20	94101-1018005	1 PLAIN WASHER
21	94201-20250	1 COTTER PIN
22	95014-71602-0A	1 MAIN STAND RESET SMALL SPRING
23	95014-71602	1 MAIN STAND RESET SPRING

RT 50
Art. Nr.: 99393

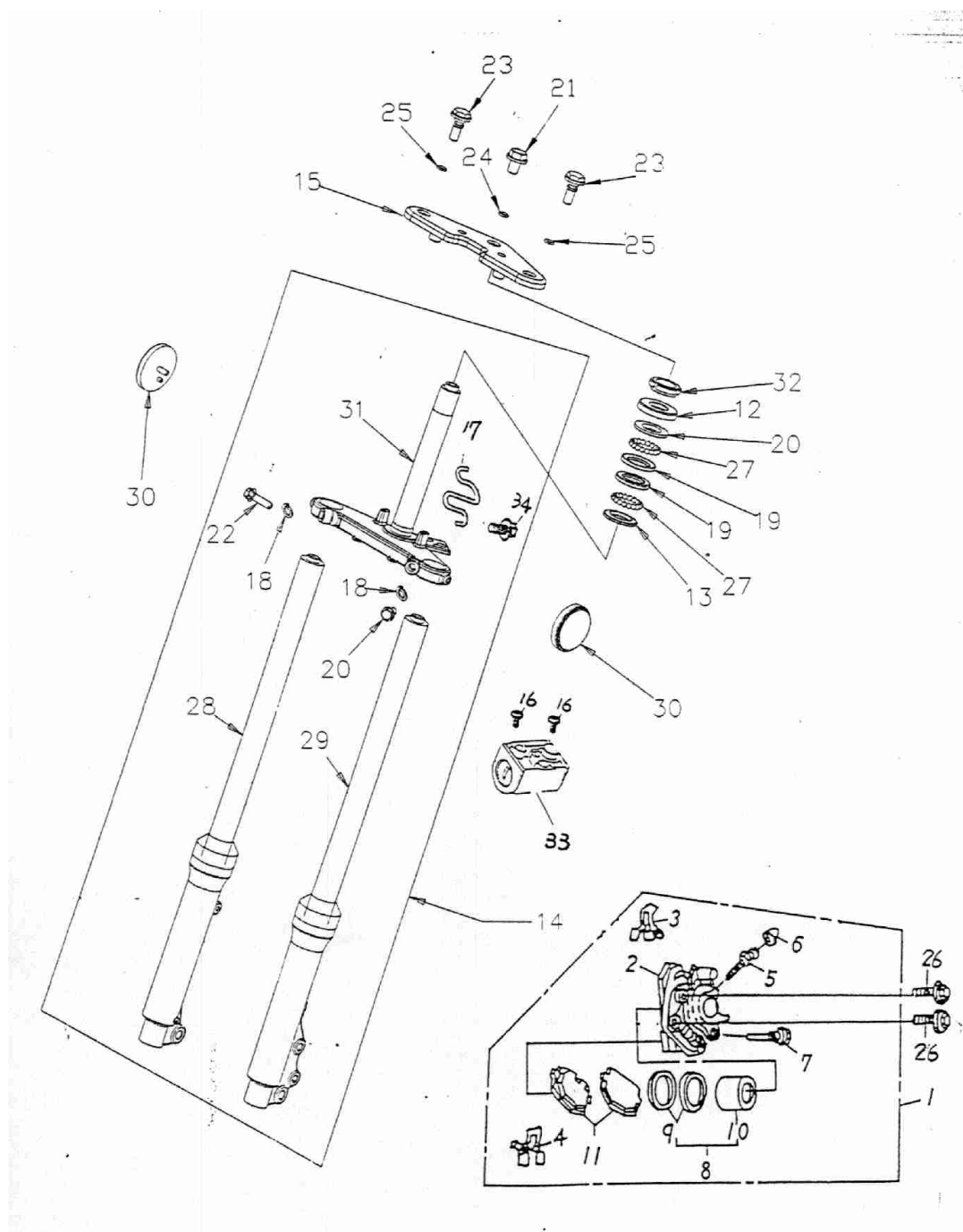
Verkleidung vorne und Hauptständer


Blatt 2 von 2

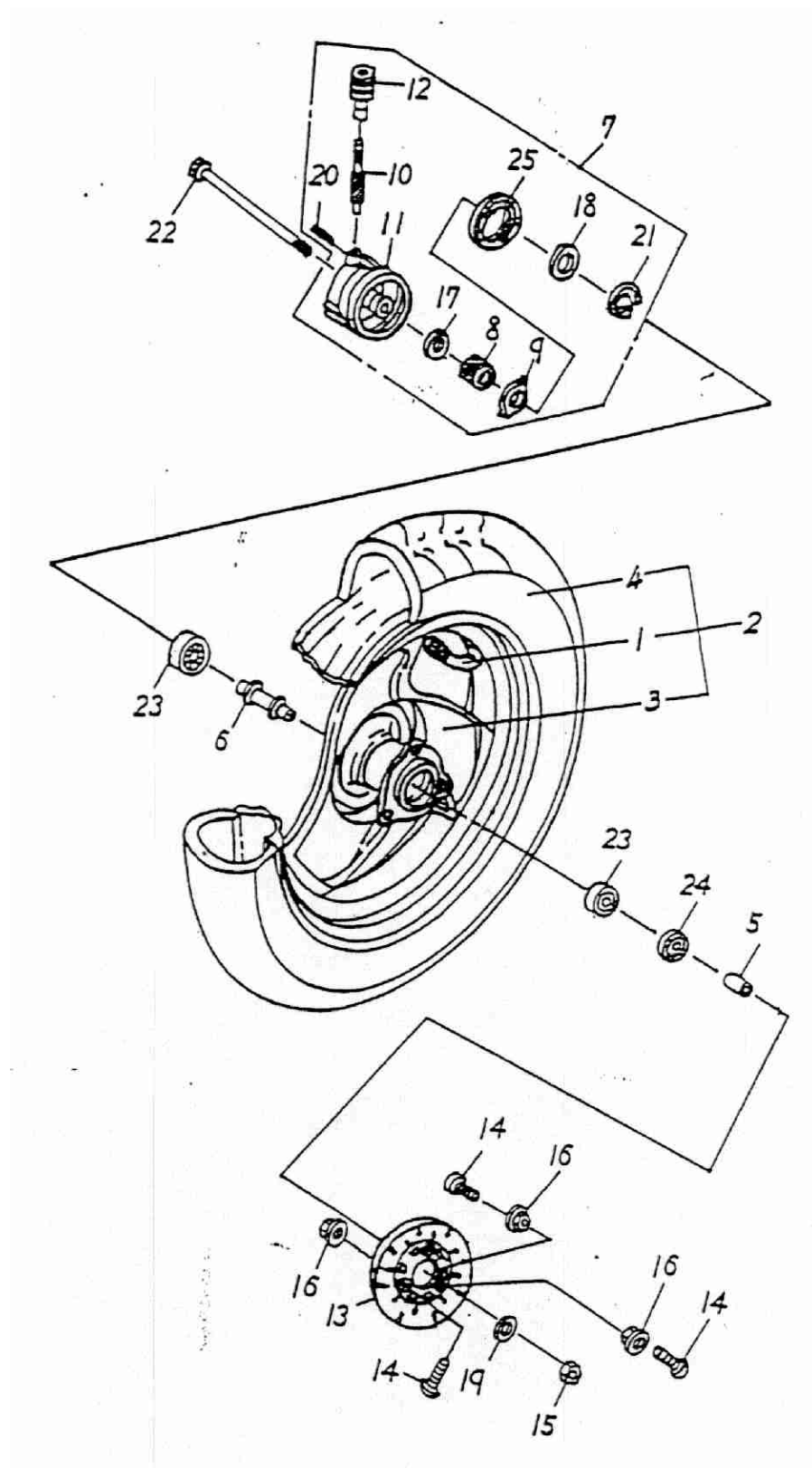
ERING



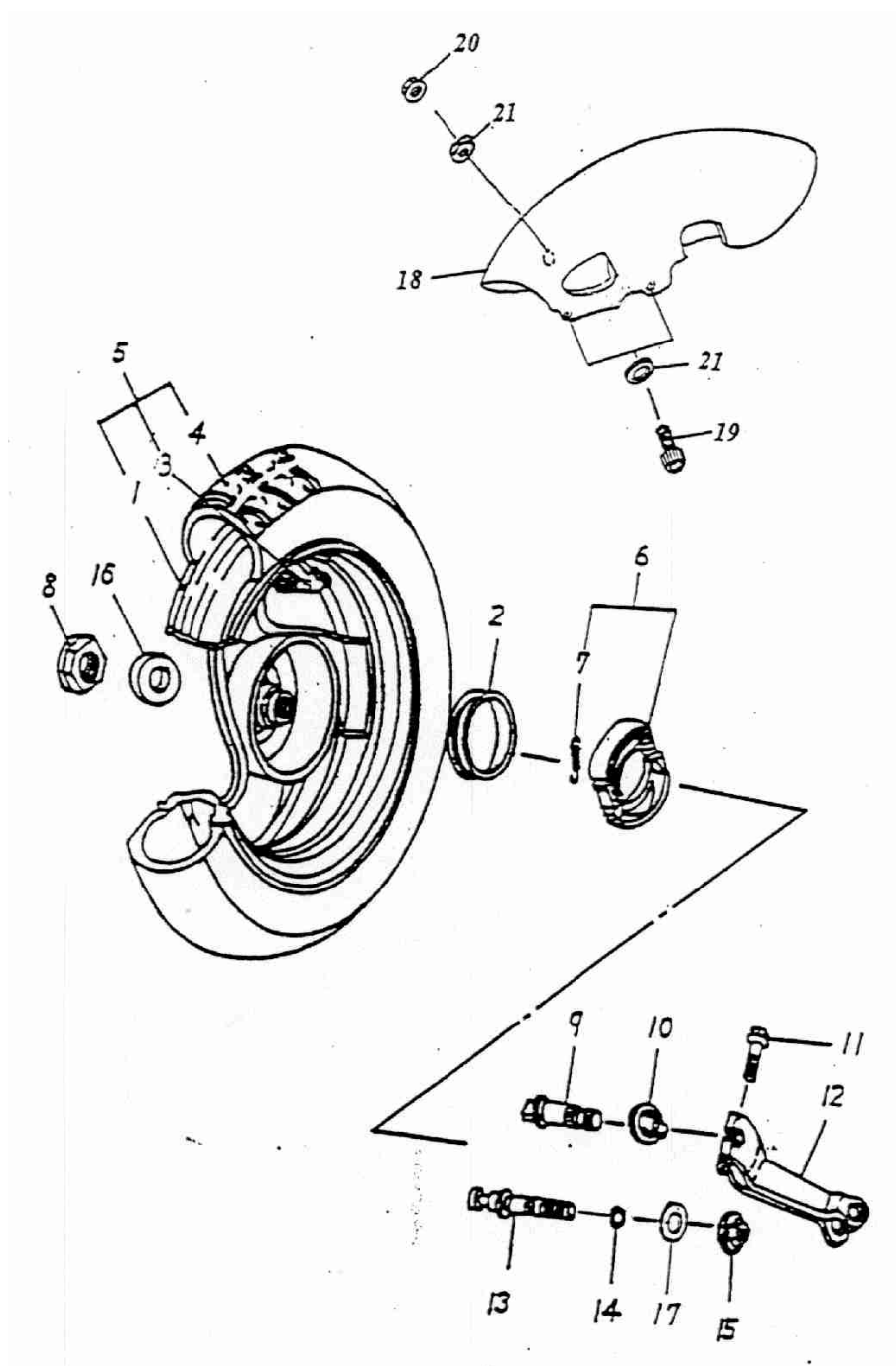
1	55100-154-000	1 OIL TANK
2	55105-145-001	1 OIL TANK CAP
3	35410-116-000	1 OIL LEVEL GAUGE
4	17502-101-000	1 OIL FILTER CUP
5	94400-0408230	1 TUBE
6	94510-08000	5 CLIP
7	17511-154-000	1 FUEL TANK ASS'Y
8	17500-154-000	1 FUEL TANK COMP
9	16950-154-000	1 FUEL CUP
10	92001-06016-10	1 HEX HEAD PHILLIPS BOLT
11	96000-06012-10G	1 HEX WASHER FACE BOLT
12	94101-0615010	1 PLAIN WASHER
13	94111-0611020	1 SPRING WASHER
14	17620-154-000	1 FUEL TANK CAP
15	92000-06014-10	2 HEX BOLT
16	94400-0408A230	1 TUBE



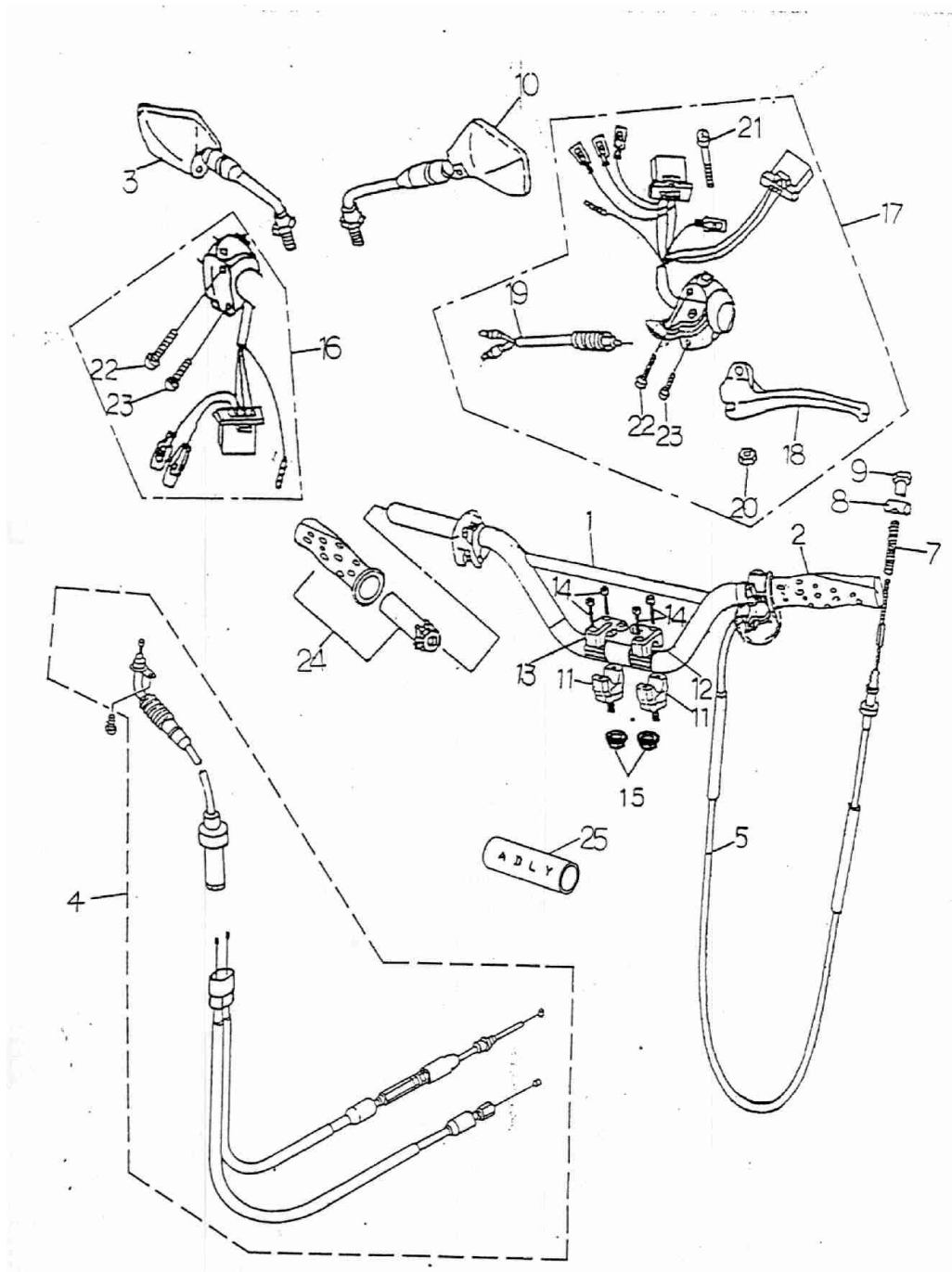
1	45000-107-001	1 FRONT BRAKE CALIPER ASS'Y
2	45010-107-000	1 FRONT BRAKE CALIPER
3	45021-107-000	1 UPPER SNUBBER SUPPORT (SMALL)
4	45026-107-000	1 LOWER SNUBBER SUPPORT (BIG)
5	45031-107-000	1 BREED SCREW KIT
6	45033-107-000	1 BREED SCREW KIT RUBBER SHROUD
7	45036-107-000	1 CALIPER SET BOLT
8	45040-107-000	1 CALIPER PISTON ASS'Y
9	45043-107-000	1 CALIPER OIL SEAL KIT
10	45046-107-000	1 CALIPER PISTON
11	45120-107-001	1 FRONT BRAKE PAD KIT
12	50301-101-000	1 STEERING STEM DUST COVER
13	53215-101-000	1 RACE BALL #5
14	51100-154-000	1 FRONT FORK ASS'Y
15	53231-154-000	1 FRONT FORK TOP BRIDGE COMP.
16	93902-06012	2 FLAT HEAD PHILLIPS BOLT
17	51117-154-000	2 CABLE BRACKET
18	94111-1018020	2 SPRING WASHER
19	53213-101-000	2 LATHE STRG INNER #3
20	53212-101-000	1 LATE CONE STRG TOP #2
21	96000-12025-19	2 HEX WASHER FACE BOLT
22	92000-10029-14	2 HEX BOLT
23	92002-10034-19	2 INNER TUBE HEX BOLT
24	94101-1032030	1 PLAIN WASHER
25	94101-1324020	2 PLAIN WASHER
26	96000-08025-12	2 HEX WASHER FACE BOLT
27	96211-101-000	2 STEEL BALL
28	53030-154-000	1 RIGHT TUBE ASS'Y
29	53130-154-000	1 LEFT TUBE ASS'Y
30	33741-128-001	2 FRONT REFLEX REDLECTOR
31	51109-154-000	1 STEERING WITH BRACKET ASS'Y
32	53220-128-000	1 STEERING HEAD TOP THREAD ASS'Y
33	53600-154-000	1 STEERING HANDLE LOCK
34	92000-06014-10	2 HEX BOLT



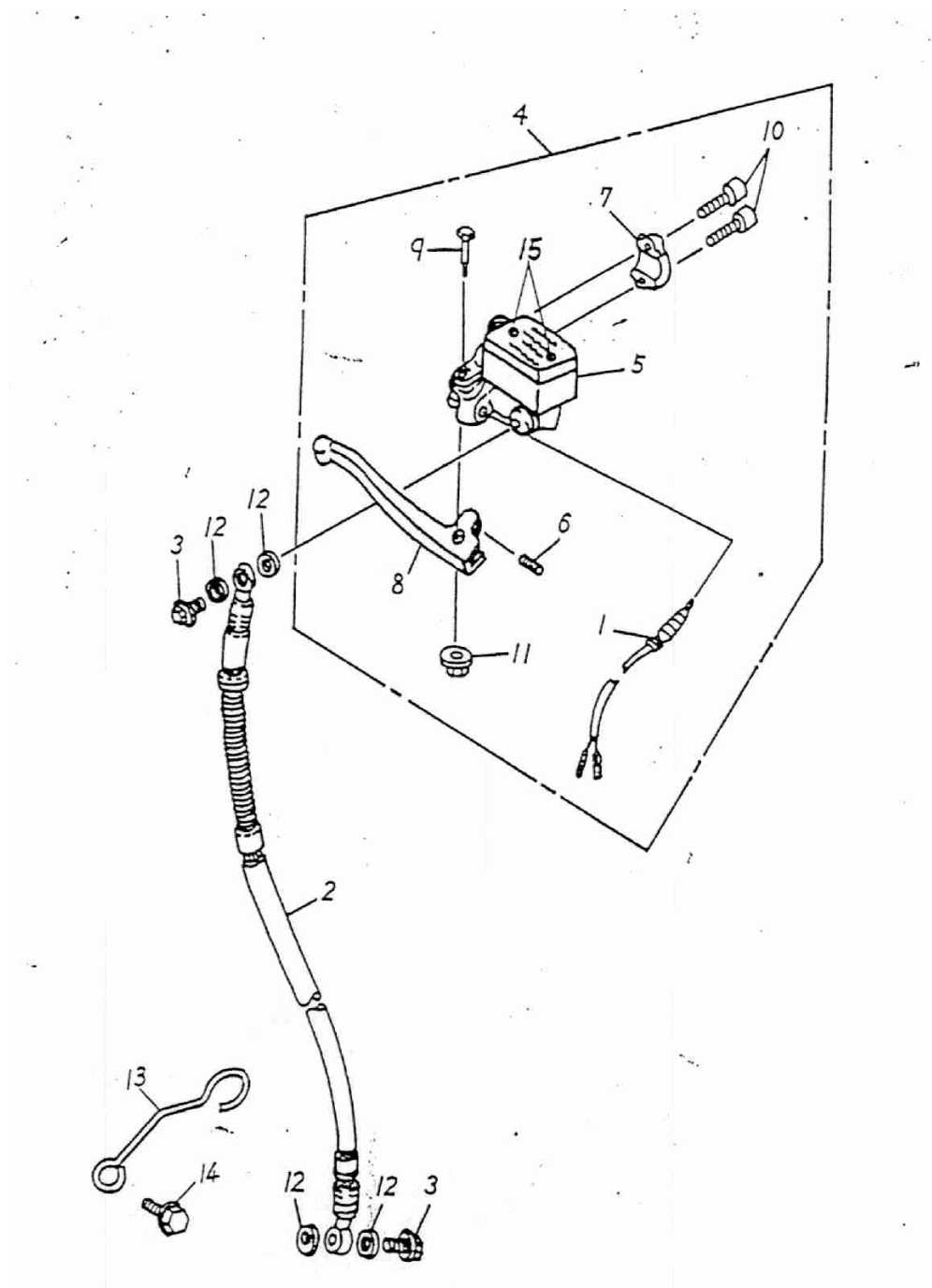
1	42616-104-000	1 AIR NOZZLE
2	42700-109-000	1 FRONT TIRE SET
3	42701-109-000	1 FRONT RIM
4	44311-107-000	1 FRONT COLLAR
5	44620-109-000	1 FRONT SPACER TUBE
6	44806-110-000	1 SPEEDOMETER GEAR ASS'Y
7	44811-110-000	1 SPEEDOMETER MAIN GEAR
8	44812-107-000	1 SPEEDOMETER GEAR BRACKET
9	44813-107-000	1 SPEEDOMETER SECONDARY GEAR
10	44816-107-000	1 SPEEDOMETER GEAR EXTERNAL COVER
11	44818-107-000	1 SPEEDOMETER GEAR COPPER HEAD
12	45015-107-000	1 FRONT BRAKE DISC
13	45016-107-000	3 BRAKE DISC HEX SOCKET BOLT
14	90350-10000	1 NUT NYLON
15	94050-10000	3 HEX FLANGE NUT WITH SERRATION
16	94101-1622010	1 PLAIN WASHER
17	94101-1628010	1 PLAIN WASHER
18	94101-1022015	1 PLAIN WASHER
19	94305-20140	1 SPLIT SPRING PIN
20	94511-1600S	1 EXTERNAL CIRCLIP
21	96000-10220-14	1 HEX WASHER FACE BOLT
22	96100-6300Z	2 RADIAL BALL BEARING
23	96500-17357	1 OIL SEAL
24	96500-40526	1 OIL SEAL
25	42711-109-00A	1 FRONT TIRE (CROSS)



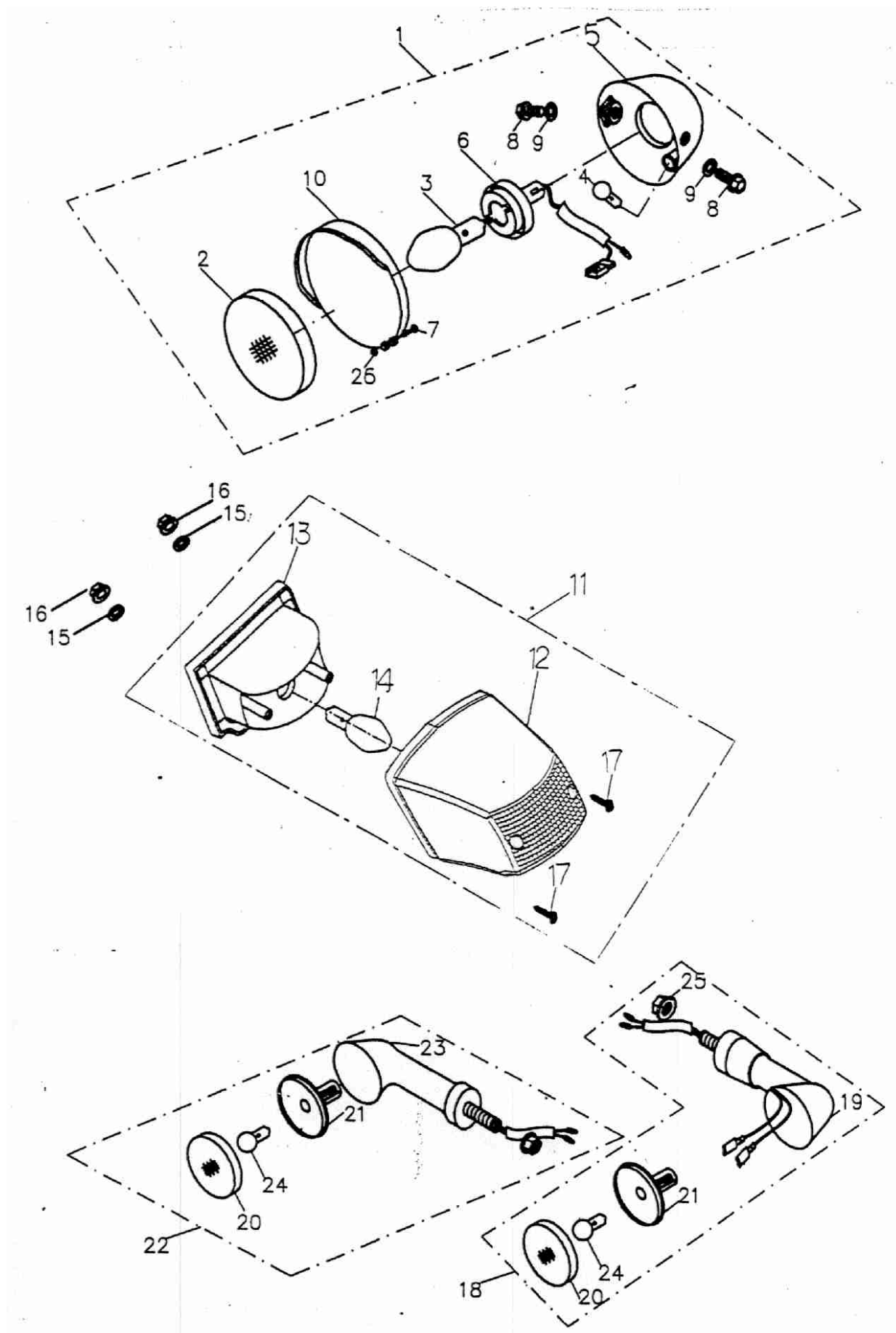
1	42801-116-000	1 REAR RIM
2	42611-104-000	1 RING#2 (REAR WHEEL)
3	42616-104-000	1 AIR NOZZLE
4	42711-109-00A	1 FRONT TIRE (CROSS)
5	42812-116-000	1 REAR TIRE SET
6	43120-110-000	1 REAR BRAKE SHOE ASS'Y
7	43120-110-00A	1 REAR BRAKE SHOE ASS'Y
8	43151-104-000	2 REAR BRAKE SHOE STRAIN SPRING
9	90350-14000	1 NYLON NUT
10	43141-101-001	1 BRAKE CAM SHAFT
11	43145-104-000	1 INDICATOR PLATE
12	96000-06030-10	1 HEX WASHER FACE BOLT
13	43410-154-000	1 REAR BRAKE ARM
14	45110-116-000	1 REAR BRAKE FIX SHAFT
15	91307-101-000	1 OIL RING
16	94050-08000	1 HEX FLANGE NUT WITH SERRATION
17	94101-1529030	1 PLAIN WASHER
18	94101-0815015	1 PLAIN WASHER
19	80115-154-000	1 REAR FENDER
20	91000-06035	2 HEX SOCKET BOLT
21	90350-06000	2 NYLON NUT
22	94101-0615010	4 PLAIN WASHER
23	96000-06012-10G	2 HEX WASHER FACE BOLT
24	50309-154-000	1 REAR FENDER BRACKET (RIGHT)



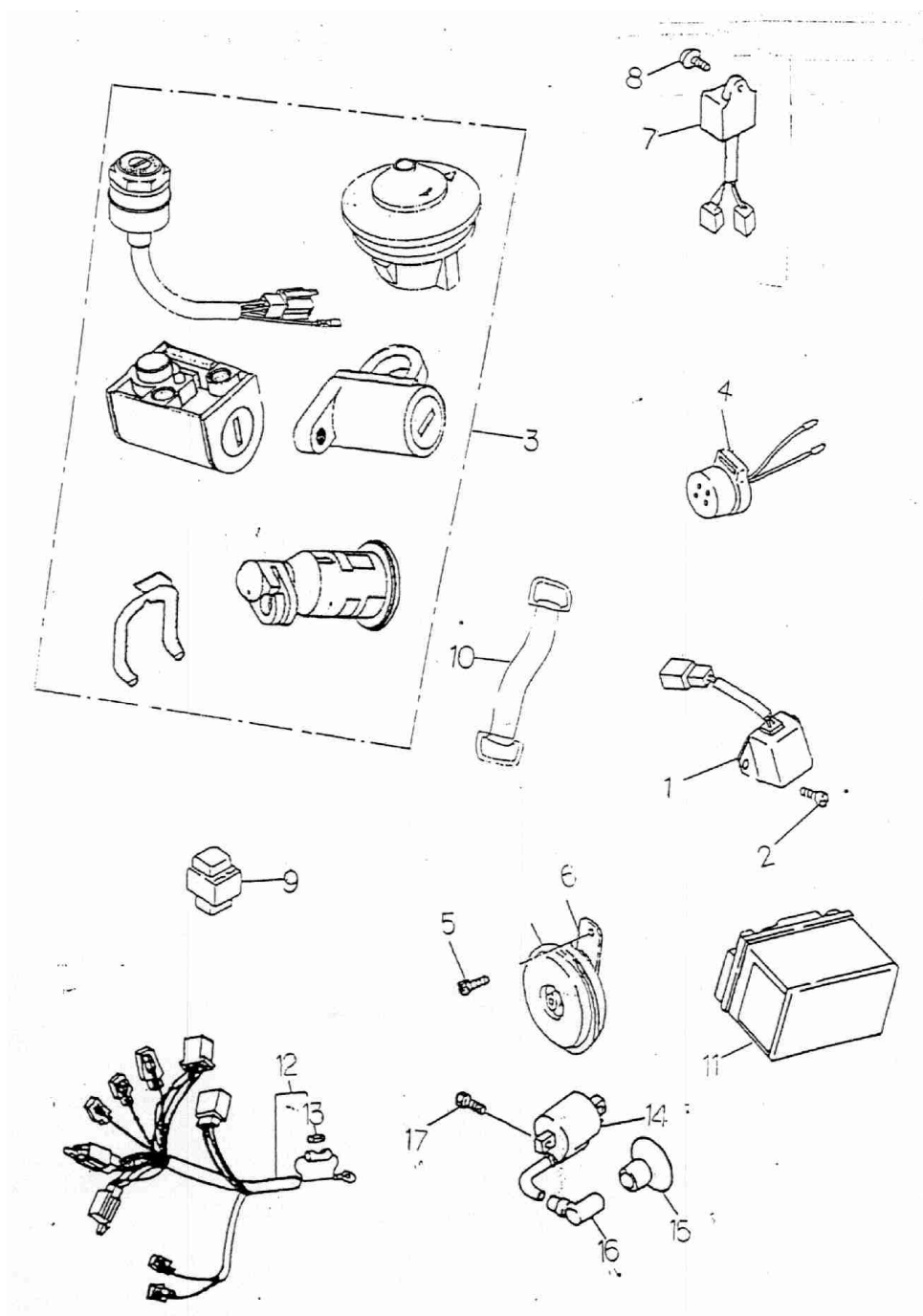
1	53100-154-000	1 HANDLE BAR
2	53166-155-000	1 HANDLE GRIP
3	88120-116-001	1 L.REAR VIEW MIRROR
4	17910-154-000	1 THROTTLE CABLE
5	43450-154-000	1 REAR BRAKE CABLE
6	93500-05010	1 PAN PHILLIPS BOLT
7	43472-110-00A	1 RESET SPRING
8	95015-31001	1 REAR BRAKE FIXTURE
9	95015-41000	1 REAR BRAKE ADJUST NUT
10	53132-145-000	1 SPONGE (ADLY MOTO)
11	53101-154-000	2 HANDLE BAR BOTTOM CLAMP
12	53102-145-000	1 LEFT HANDLE BAR CLAMP
13	53103-145-000	1 RIGHT HANDLE BAR CLAMP
14	91000-06025	4 HEX SOCKET BOLT
15	94050-10000	2 HEX FLANGE NUT WITH SERRATION
16	35150-154-000	1 R.HANDLE SWITCH ASS'Y
17	35200-154-000	1 L.HANDLE SWITCH ASS'Y
18	53178-125-000	1 LEFT SIDE LEVER
19	35345-111-000	1 L.BRAKE SWITCH WIRE
20	90350-05000	1 NYLON INSERT LOCK NUT
21	90116-107-000	1 LEFT LEVER SET BOLT
22	93500-05035	1 PAN PHILLIPS BOLT
23	93500-05025	1 PAN PHILLIPS BOLT
24	88110-116-001	1 R.REAR VIEW MIRROR



1	35340-158-000	1 R.BRAKE SWITCH WIRE
2	45450-154-000	1 BRAKE HOSE
3	45456-107-000	2 BRAKE HOSE HEX BOLT
4	45500-107-000	1 MASTER CYLINDER SUB ASS'Y
5	45510-107-000	1 MASTER CYLINDER SUB
6	45515-107-000	1 LEVER RESET SPRING
7	53174-107-000	1 MASTER CYLINDER BRACKET
8	53175-107-000	1 RIGHT LEVER
9	90115-107-000	1 RIGHT LEVER SET BOLT
10	91000-06025	2 HEX SOCKET BOLT
11	94050-06000	1 HEX FLANGE NUT WITH SERRATION
12	94101-1014510	4 COPPER PLAIN WASHER
13	45451-118-000	1 BRAKE HOSE BRACKET
14	92000-06018-10	1 HEX BOLT
15	45465-107-000	2 FLAT HEAD SCREW



1	33100-154-000	1 HEAD LIGHT ASS'Y
2	33103-154-000	1 GLASS
3	34901-110-00A	1 HEAD LIGHT BULB (E-MARK)
4	34909-120-000	1 POSITION LIGHT BULB
5	61301-154-000	1 HEAD LIGHT CASE
6	33111-154-000	1 HEAD LIGHT COVER
7	93500-04030	2 HEX PHILLIPS BOLT
8	92005-08016	2 HEX BOLT BALD-HEADED
9	94111-0814020	2 SPRING WASHER
10	33104-154-000	1 HEAD LIGHT RING
11	33700-154-000	1 TAIL LIGHT ASS'Y
12	33702-154-000	1 TAIL LIGHT LENS
13	33711-154-000	1 REAR LIGHT SOCKET
14	34906-105-00A	1 TAIL LIGHT BULB (E-MARK)
15	94101-0615010	2 PLAIN WASHER
16	94050-06000	2 HEX FLANGE NUT WITH SERRATION
17	93903-04038	2 TAPING SCREW TRUSS HEAD PHILLIPS
18	33400-154-000	2 R.SIGNAL ASS'Y
19	33401-154-000	2 R.SIGNAL SOCKET
20	33402-154-000	4 R.SIGNAL COVER
21	33425-154-000	4 R.SIGNAL BULB SOCKET
22	33450-154-000	2 L.SIGNAL ASS'Y
23	33451-154-000	2 L.SIGNAL SOCKET
24	34905-118-000	4 BULB (E-MARK)
25	94050-10000	2 HEX FLANGE NUT WITH SERRATION
26	94050-06000	1 HEX FLANGE NUT WITH SERRATION



1	31600-110-000	1 REGULATOR RECTIFIER
2	93500-05012	1 PAN PHILLIPS BOLT
3	35010-154-000	1 KEY SET
4	38301-107-000	1 FLASHER RELAY
5	96000-06012-10G	1 HEX WASHER FACE BOLT
6	38110-101-001	1 HORN (E-MARK)
7	30410-117-000	1 C.D.I UNIT
8	93903-05016	1 TAPPING SCREW TRUSS HEAD PHILLIPS
9	38501-105-000	1 STARTING RELAY
10	31520-101-000	1 RUBBER STRAP
11	31500-116-000	1 BATTERY
12	32100-154-00A	1 MAIN WIRE HARNESS
13	98200-106-000	1 FUSE
14	30510-116-000	1 HIGH TENSION COIL
15	30700-101-000	1 SPARK PLUG CAP
16	30605-116-000	1 RUBBER CAP
17	91000-06020	2 HEX SOCKET BOLT